



KAPUR & ASSOCIATES, INC.
 CONSULTING ENGINEERS
 7711 N. PORT WASHINGTON ROAD
 MILWAUKEE, WISCONSIN 53217
 Phone: 414.341.8988 Fax: 414.281.4117
 www.kapurengineers.com

PROJECT:
**SWALLOW SCHOOL
 PARKING LOT
 RENOVATIONS**

LOCATION:
 W299 N5614
 COUNTY ROAD E
 HARTLAND,
 WISCONSIN

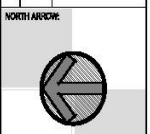
CLIENT:
 SWALLOW SCHOOL
 DISTRICT



RELEASE:
 WAUKESHA
 COUNTY REVIEW

REVISIONS:

#	DATE	DESCRIPTION
1	7/20/2012	CR #1 88 REV.



SCALE: 1" = 30'

SEAL:

DATE: 08/27/2012

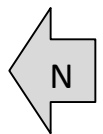
SHEET:
SITE PLAN

PROJECT MANAGER: TP
 PROJECT NUMBER: 130726.01
 DATE: 08/27/2012

SHEET NUMBER:
C102

Swallow School Map for MORNING DROP OFF 7:45-8:00 am

— = bike path



Bike Racks

Student Entry 7, 8

Student Entry 5, 6

Line-Up Grades K-4

Cone Zone for Student Drop off

Cone Zone

4K Parent Drop Off in Main Lobby

Bus Drop Off

Parking only to escort students into or out of school

Enter/Exit for Student Drop off

Buses & Parent Parking to Enter School

Swallow School Map for AFTERNOON PICK UP 3:15 pm

